

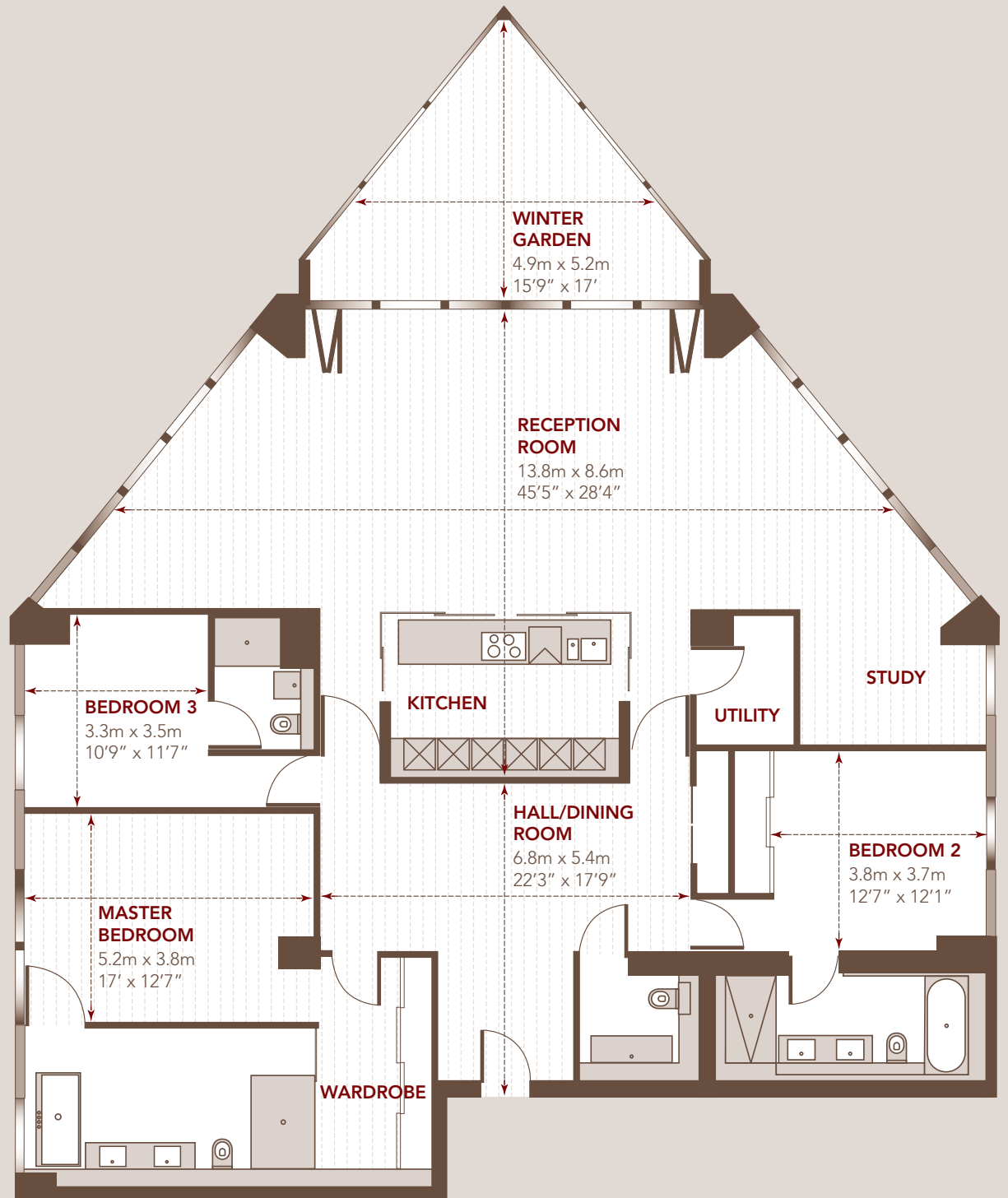
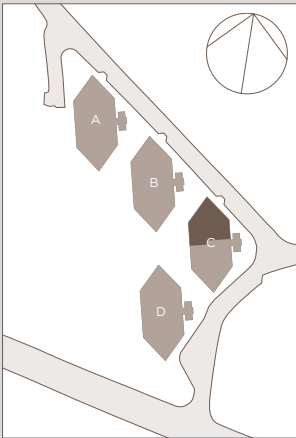
PAVILION C PREMIUM UPPER FLOORS LEVELS 17 TO 21

TYPE F







3 BEDROOM APARTMENT

257 sq. m.
2,770 sq. ft.

Apartment number
C1701
C1801
C1901
C2001
C2101



MATERIALS KEY

| | | |
|---|---|---|
|  Walls |  Timber flooring |  Double glazed glass |
|  Solid timber panels behind double glazed glass |  Louvered timber panels behind double glazed glass |  Single glazed glass |